

**ROBINSON
MANUFACTURING**
COMPANY INCORPORATED

MANUFACTURING SINCE 1954

604 South 10th Street
Broken Arrow, Oklahoma 74012
(918) 251-0353
FAX (918) 251-0534

www.robinsonmfgcoinc.com



ROBINSON MANUFACTURING
COMPANY INCORPORATED

PRODUCT WARRANTY

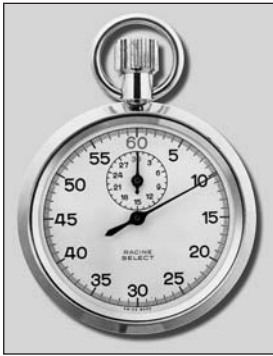
Robinson Manufacturing warrants products manufactured by Robinson Manufacturing to be free of defective material and workmanship for one year from the date of shipment by Robinson Manufacturing. The liability of Robinson Manufacturing for defective equipment during the warranty period shall be limited to the repair of such equipment or replacement thereof without charge for parts or labor provided by Robinson Manufacturing. Robinson Manufacturing shall be so liable only if Robinson Manufacturing is contacted in regard to such defect immediately after its discovery

Buyer should return the defective product under warranty to Robinson Manufacturing only after receipt of Robinson Manufacturing's specific permission to do so. This warranty does not extend to any Robinson Manufacturing product which has been subject to misuse, neglect, accident, modification or improper installation, or any product which has been repaired or altered by persons not expressly approved by Robinson Manufacturing. Robinson Manufacturing will not be liable for damages, loss or expense directly or indirectly arising from the use of the products or for any liability from their use either separately or in combination with other equipment or material or for any other cause.

MERCHANDISE RETURNS

No goods should be returned to Robinson Manufacturing without specific authorization. All authorized returns for merchandise shipped by Robinson Manufacturing less than 6 months previously which are returned for any reason other than valid warranty claims will be charged a 15% restocking charge plus any expense necessary to place the merchandise in saleable condition. The restocking charge shall be 25% for goods shipped by Robinson Manufacturing more than 6 months but less than 1 year previously. No returns for credit will be accepted after 1 year from original Robinson Manufacturing shipment. Returns should be shipped freight prepaid.

ACCESSORIES - OTHER



STOPWATCH - For Industrial use.

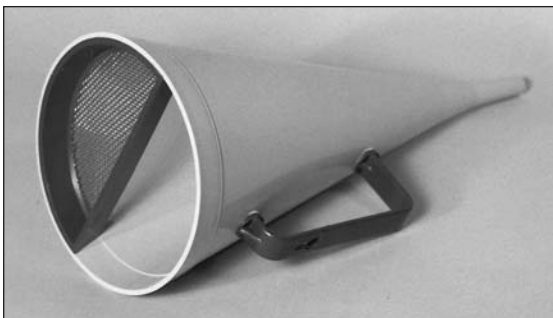
Sixty second dial. Long hand registers fifths of seconds and the small hand registers minutes, up to 30. Start, stop and flyback are activated from the crown. It has a lever movement and unbreakable mainspring. The case is nickel plated.

Catalog Number 406A001 7 Jewels

STOPWATCH - Digital

Electronic timer, with 1/100th of a second resolution. Three button arrangement. One is for lap time and reset, one for the mode and the third for start-stop.

**Catalog Number
406A004**



FUNNEL, Viscometer, Marsh

Used to obtain an indication of the relative viscosity of drilling mud. The funnel is molded from a tough, durable plastic that resists breaking or cracking. A brass lined orifice assures consistency in all readings.

Catalog Number 406A005

CUP - Plastic

A measuring cup to be used in conjunction with the Marsh Funnel Viscometer. Raised molded marking on the inside, handle and dual pour out.

**Catalog Number
406A006**

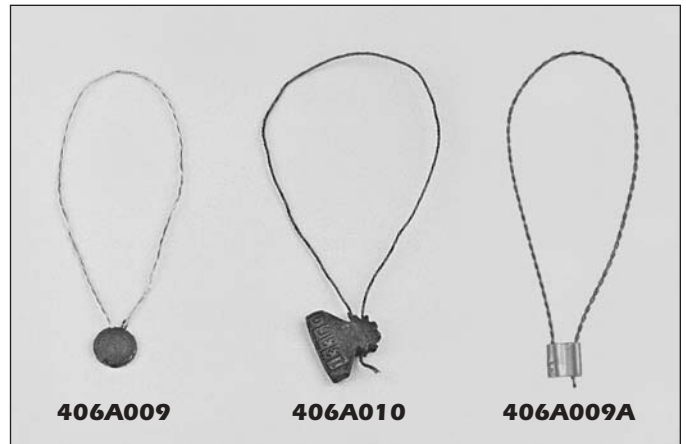
1000 ml/32 oz



PRESS, Lead sealing

For use with lead seals. Available with blank dies or marking dies (7/16" diameter) for one or both sides of the lead disc. Four (4) characters maximum per die.

Catalog Number	Description	Size
406A007	Bulldog	2-1/2" x 5"
406A008	Cut-R-Press	1-1/2" x 8"



SEAL - LEAD

Twisted wire and lead seal. 7/16" diameter lead seal with 18", 4 ply, 30 gauge galvanized wire. Numbered seal can include the company initials on one side, 5 characters maximum, and consecutive numbers, 6 numbers maximum, on the other side. Minimum quantity 1000.

Plain Seals

406A009 Galvanized Wire

406A009C Copper Wire

406A009S Stainless Steel Wire

406A009A Aluminum head, galvanized wire

Numbered Seals

406A010 Galvanized Wire

406A010C Copper Wire

406A010S Stainless Steel Wire

DIES, Lead Sealing 1/2"

406A011 Blank or engraved



GLOBE MECHANICAL SEAL

Precision built to stay locked. Embossed identity and consecutive numbering. Lettering part has a maximum capacity of 18 characters including spaces and periods. 8-1/2" long with 5/16" head. Minimum quantity 1000.

406A012 Globe mechanical seal.



PREMIER AUTOMATIC SEAL

Self-locking, permanent mechanical closure. 8-3/4" x 5/16" metal strap can be embossed with name and consecutive numbering. Lettering part has a maximum capacity of 15 characters including spaces and periods. Minimum quantity 1000.

406A013 Premier automatic seal.



TACHOMETER

Hand held tachometer for checking speed of centrifuges. Operates clockwise or counter clockwise up to 4000 rpm's. 2-3/4 inch diameter face.

406A014 Tachometer.

EXTENSION, Tachometer

An extension for the tachometer to enable checking the rpm's of the centrifuge with the lid closed. Six inches long.

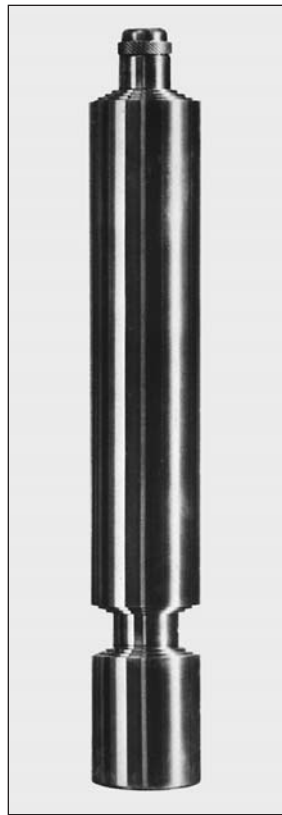
406A015 Extension, tachometer.



BRUSH-LAC SIGHT GLASS

Brush, For cleaning LAC unit sight glass, 3/4" x 3" brush body, 30" over all length.

406A016



REID VAPOR PRESSURE BOMBS IMMERSION TYPE

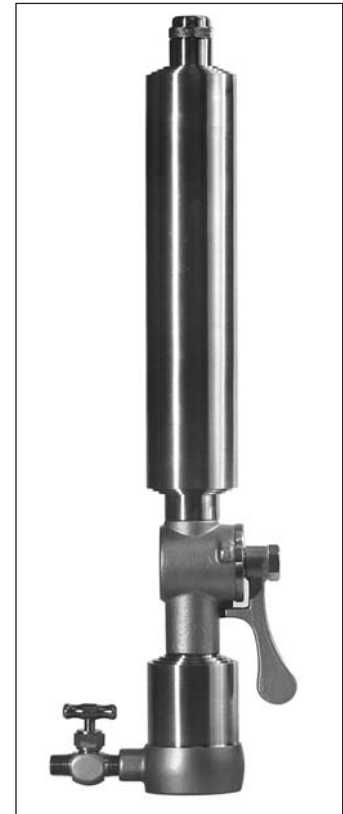
For the determination of vapor pressure of gasoline, volatile crude oil and other volatile petroleum products with pressure under 26 psi. Confirms to ASTM D323 and related specifications.

Model 407A001

Stainless Steel Construction

Model 407A002

Nickel plated brass construction.



PRESSURE TYPE

For the determination of vapor pressure of volatile petroleum products with pressures ranging from 26 to 100 psi. Confirms to ASTM D323 and related specifications.

Model 407A003

Stainless Steel Construction.

Model 407A004

Nickel plated brass construction.



**LIQUEFIED
PETROLEUM
GAS TYPE**

For the determination of vapor pressure of liquefied petroleum gases (lpg). Confirms to ASTM D1267 and related specifications.

Model 407A005
Stainless Steel Construction.



**FLEXIBLE
CONNECTING HOSE**

Nylon lined with knurled handwheels. The hose has a stranded copper wire wound spirally under the reinforcing layers of the hose to electrically connect the two 1/4" NPT female connectors.

407A025 Stainless steel connectors, 24"
407A026 Brass connectors, 24"

**REID VAPOR PRESSURE
GAUGES**

Large 4-1/2" dial for precise reading and repeatability. Brass 1/4" IPS male thread fitting to attach to bomb. Bronze Bourdon tube, recalibrating screw and carrying handle. Conforms to ASTM D323 and D1267.



PARTS RVP BOMBS

- 407A006** Gauge adapter
- 407A007** Seal "O" ring upper
- 407A008** Gas chamber, stainless steel
- 407A009** Gas chamber, nickel plated brass
- 407A010** Seal "O" ring lower
- 407A011** Liquid chamber, 1 opening type, stainless steel
- 407A012** Liquid chamber, 1 opening type, nickel plated brass
- 407A013** Plug valve
- 407A014** Seal cap for plug valve
- 407A015** Seal ring for plug valve, 2 required
- 407A016** Packing for plug valve
- 407A017** Liquid chamber, 2 opening type, stainless steel
- 407A018** Liquid chamber, 2 opening type, nickel plated brass
- 407A019** Needle valve, for liquid chamber
- 407A020** Packing, needle valve
- 407A021** Tip, needle valve
- 407A022** LPG conversion adapter, stainless steel
- 407A023** Cap
- 407A024** Cap with chain



Model Number	Range PSI	Figure interval	Div. PSI
407A028	0 - 15	1	0.1
407A029	0 - 30	2	0.2
407A031	0 - 60	4	0.25
407A032	0 - 100	5	0.5
407A034	0 - 300	10	1
407A035	0 - 600	20	2

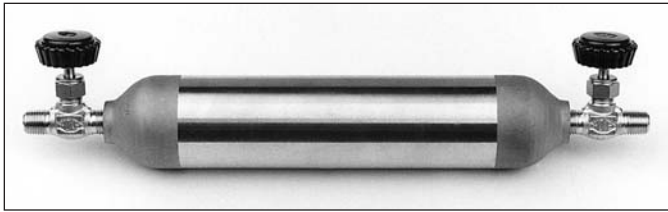
**REID VAPOR
PRESSURE BOMB
BATH**

Constant temperature water bath for determination of liquid petroleum products and liquefied petroleum gases. Flush mount bench top installation with double-wall construction and fiberglass insulated stainless steel tank. Microprocessor temperature control, ±0.2°F, with maximum temperature 212°F. Conforms to ASTM D323, and D1267.



Dimensions: 15" x 15" x 36". Weight 67 lbs.

Model 407A037 Four bomb capacity

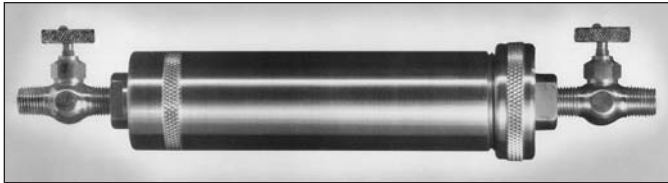


SAMPLE BOMBS

Sample cylinders are manufactured in accordance with D.O.T. specifications. The cylinders are designed for safe, reliable containment of gas or liquid samples during drawing, storage and handling or transport per D.O.T. regulations. Constructed of 304 stainless steel, with female pipe threads in each end.

407B039	100ml	407B042	600ml*
407B040	300ml	407B043	1000ml
407B041	500ml		

* Not D.O.T. approved.



CORROSION TEST BOMB

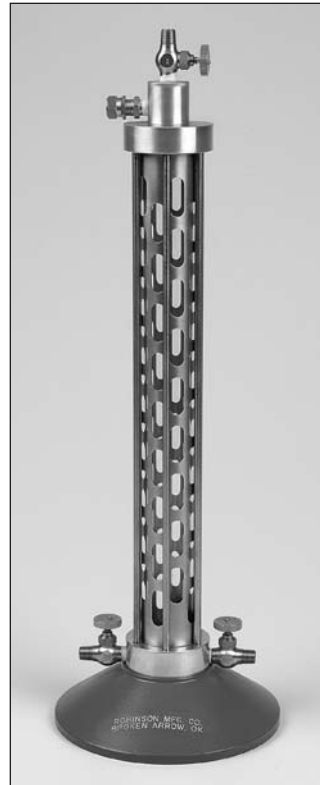
For conducting the test for copper strip corrosion by liquefied petroleum (LP) gases according to ASTM D1838. Constructed of stainless steel, with two 1/4" needle valves and knurled threaded cap with "O" ring seal.

407A044 Corrosion test bomb.
For connecting hose see 407A025

COPPER STRIP

To be used with the above 407A044 Corrosion Test Bomb. The strip is smooth ready for final polishing and cleaning. It is 1/2" x 3" x 1/8" with a hole on the end for hanging in the bomb.

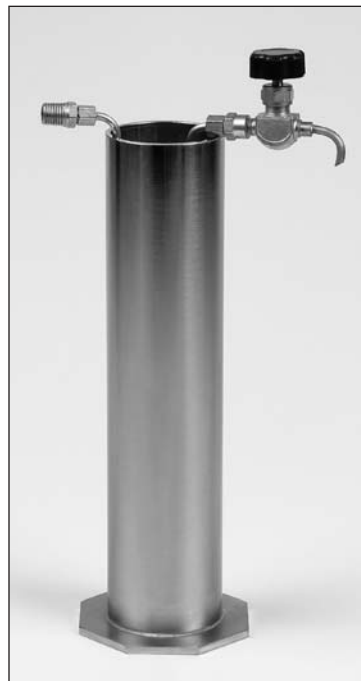
407A045 Copper Strip



CYLINDER, HYDROMETER LPG

To determine the specific gravity of liquefied petroleum gases, (LPG), such as propane and butane and other light hydrocarbons under vapor pressure conditions corresponding to the temperature of the liquid. The cylinder is constructed of a transparent plastic barrel held between aluminum end plates with stainless steel tie-rods and stainless steel safety guard. Working pressure is 200 psi and a relief valve is attached and set for this pressure. Conforms to ASTM-D1657 and GPA2140. For specific gravity hydrometers see the hydrometer section of the catalog.

- 407B046** Cylinder, Hydrometer complete
- 407A047** Cylinder, plastic barrel, replacement
- 407A048** Gasket, pressure
- 403A093** Hydrometer, LPG (see Hydrometers)



PRE-COOLING APPARATUS

For determining the volatility and residues of Liquefied Petroleum Gases. Brass cooling vessel 2-3/4" (7cm) x 12" (30cm) with 20 foot (6m) copper cooling coil, compression fittings and needle valve. Weight 96 oz. ASTM designation D1837; D2158 and GPA2140.

Model 407B074



FLASH POINT TESTER PENSKY-MARTENS

For determination of flash point of fuel oils, lube oils, suspensions of solids and other liquids according to ASTM D93. Equipped with a 750 watt heating element and heat control with reference dial. Operates on 120 volts A.C. Thermometer not included. For thermometers see 405A267, P-M low ASTM 9F and 405A269, P-M high ASTM 10F. Dimensions: 11" x 7" x 18" high. Weight 38 lbs.

Model 407A049

Flash Point Tester, Tag Closed Cup



FLASH POINT TESTER TAG CLOSED CUP

For determination of flash points of liquids below 175°F, according to ASTM D56. Complete with water bath, cover assembly with tag closed cup flashing mechanism, two thermometer wells, test flame gauge, cup, orifice, 150 watt heater and reference dial for temperature adjustments. Operates on 120 volt A.C. Thermometers not included. For thermometers see 405A267, ASTM 9F, and 405A336, ASTM 57F Dimensions, 5" x 10". Weight 7 lbs.

Model 407A050

Flash Point Tester, Tag Closed Cup.



FLASH POINT TESTER CLEVELAND OPEN CUP

For determination of flash and fire points of all petroleum products except fuel oils and those having an open cup flash point below 175°F., according to ASTM D92. Equipped with 750 watt heating element, stepless control, adjustable test flame and flash cup, Thermometer not included. For thermometer see 405A271, ASTM 11F. Operates on 120 volts A.C. Dimensions, 11" x 6" x 15". Weight 21 lbs.

Model 407A051

Flash Point Tester, Cleveland Open Cup

